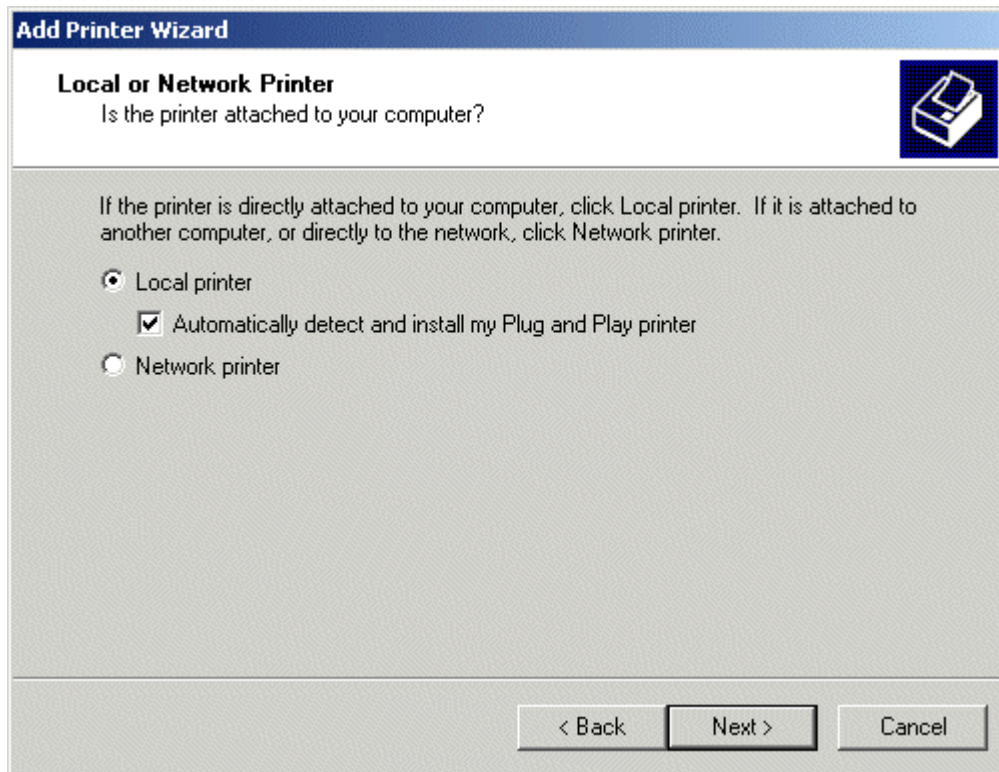


## Install the ORPro 3.0 Converter Manually

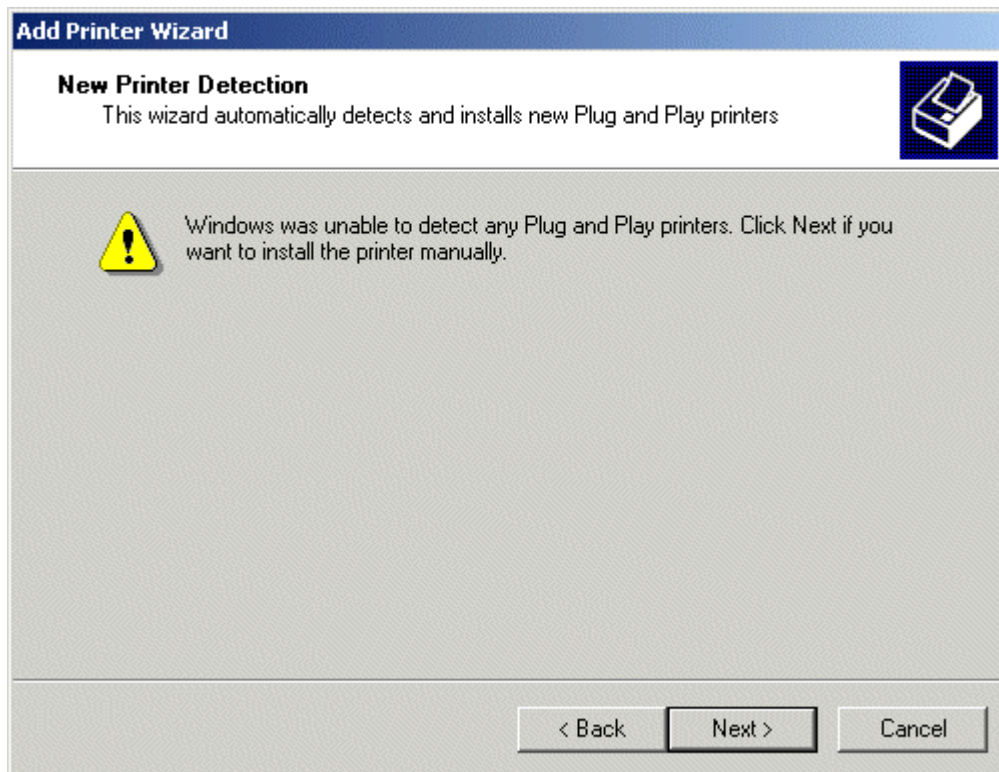
1. Click Start | Settings | Printers and launch the “**Add Printer**” wizard.



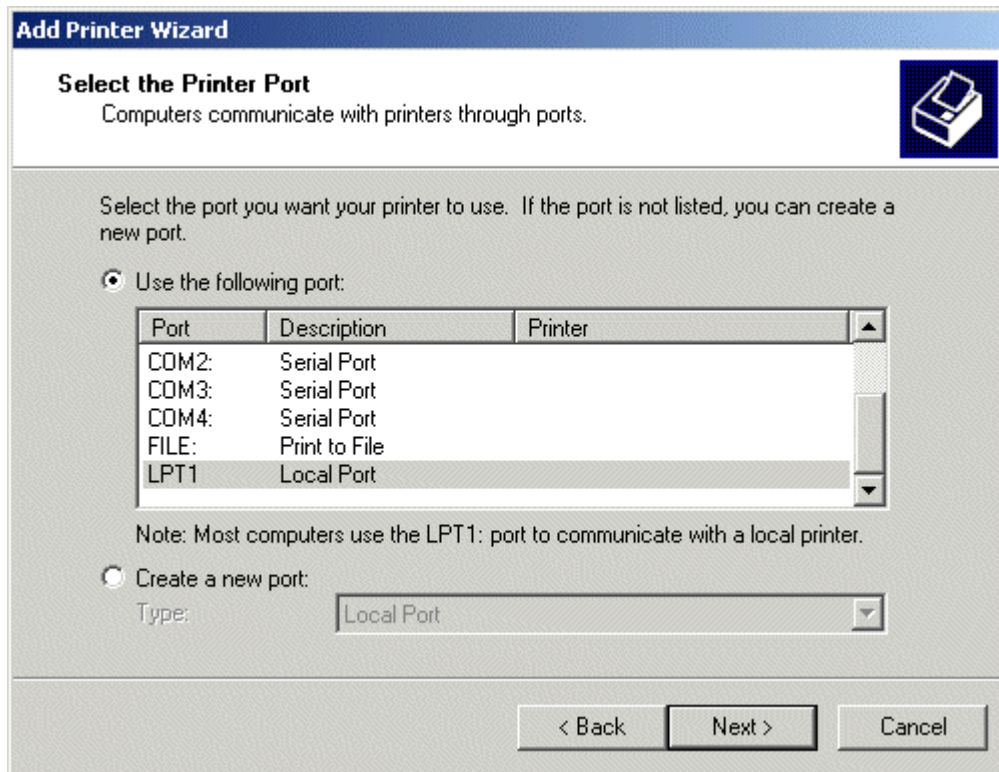
2. Click **Next**



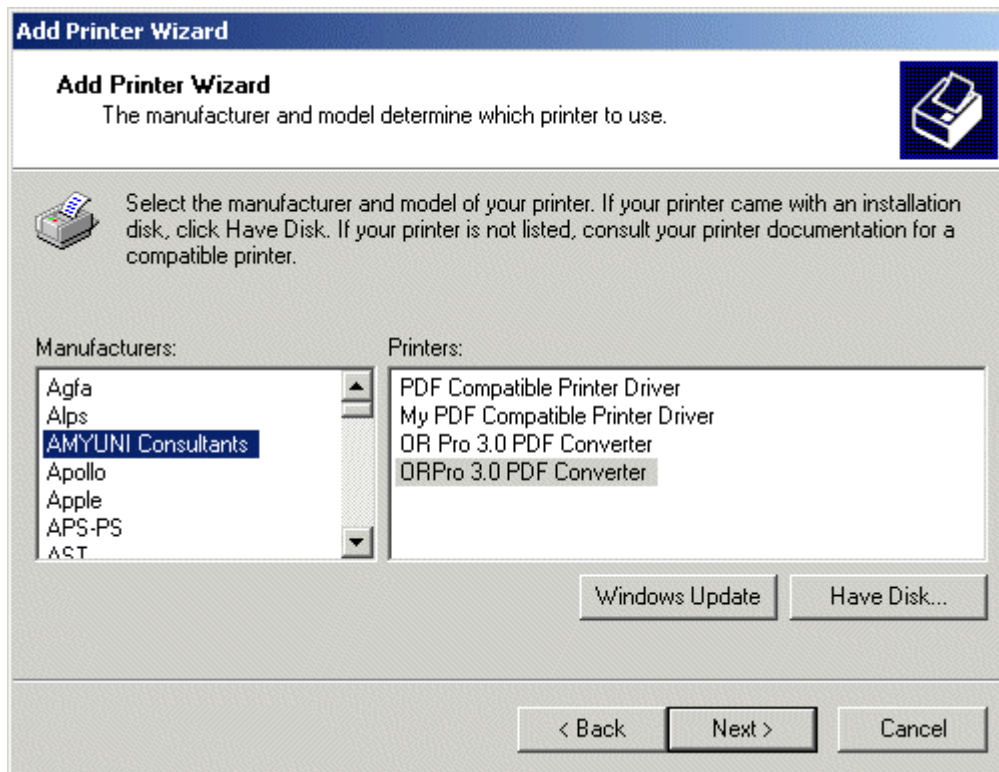
3. Click **Next**



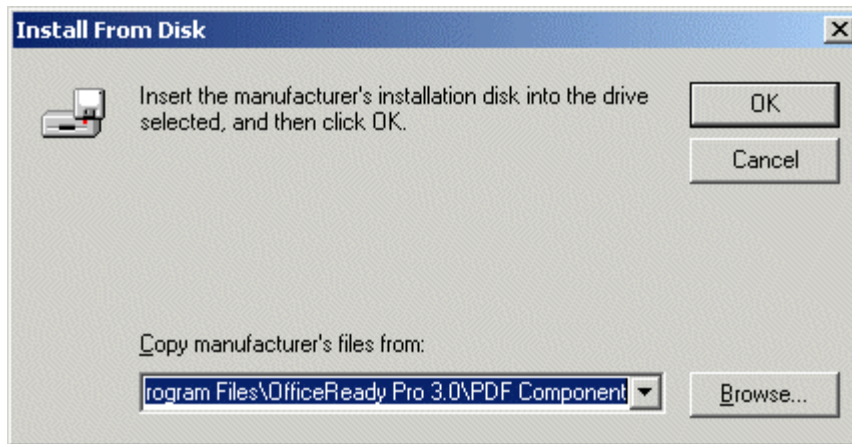
4. Click **Next**



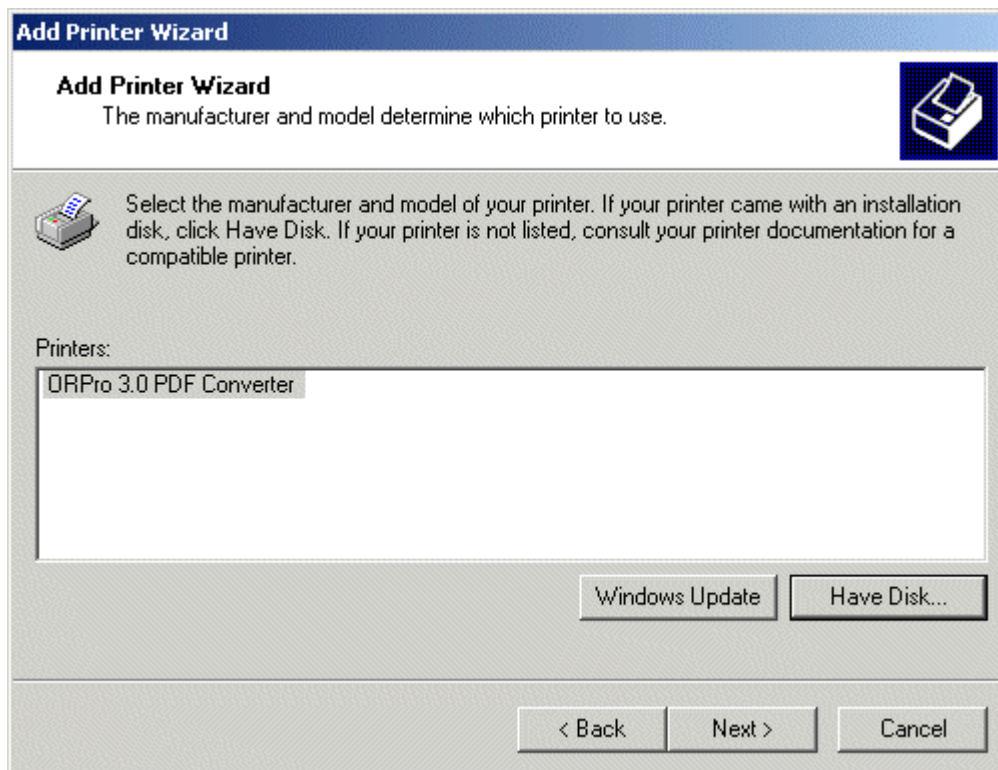
5. Select the installed **LPT1** port and click **Next**. Go straight to **Step 6**



6. Click the "**Have Disk**" button

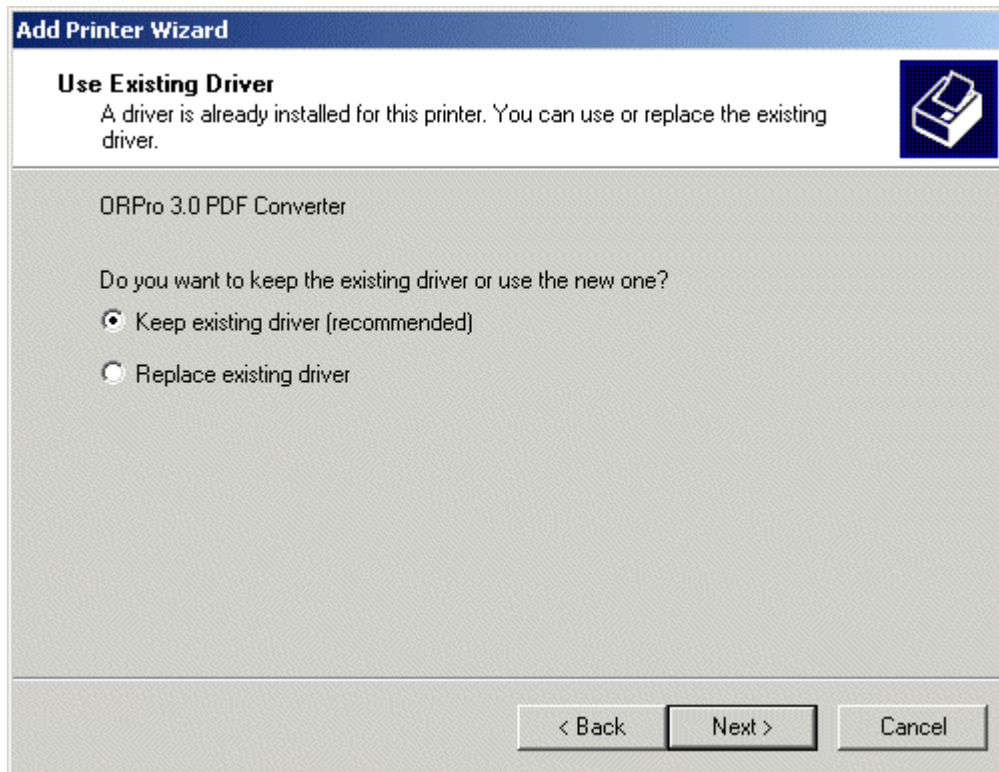


7. Enter the path of the ORPro 3.0 PDF Converter install directory i.e. “**C:\Program Files\OfficeReady Pro 3.0\PDF Component\acpdf.inf**”

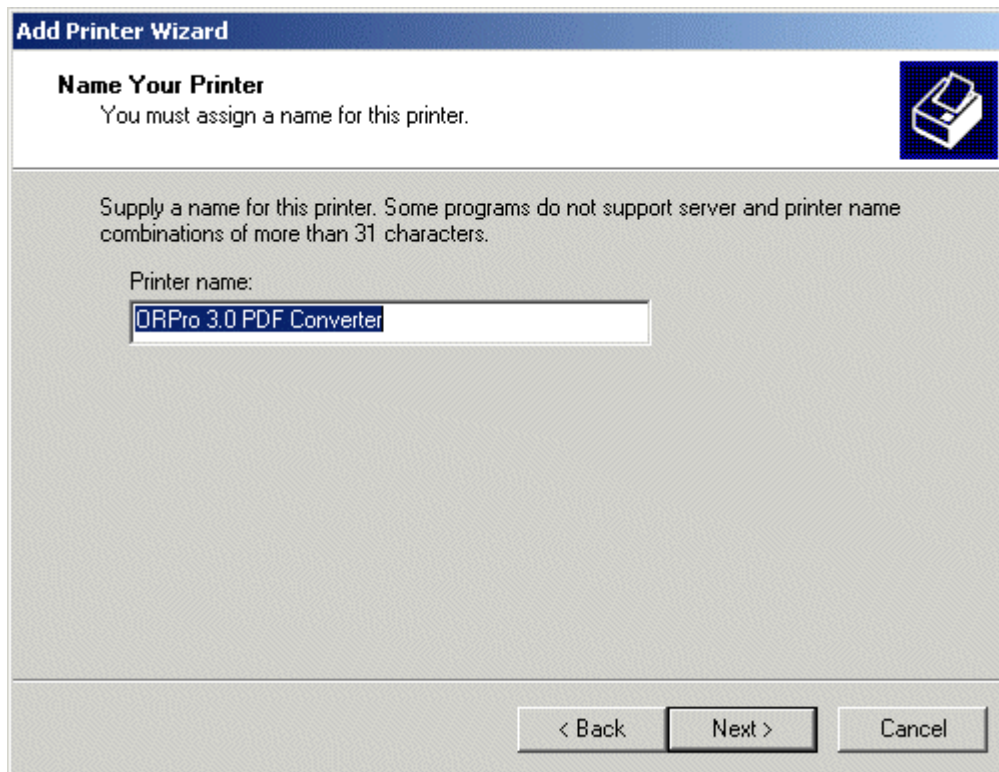


**Note:** The name of the Printer will most likely not be ORPro 3.0 PDF Converter at this point. You will need to rename the Printer at **Step 9**.

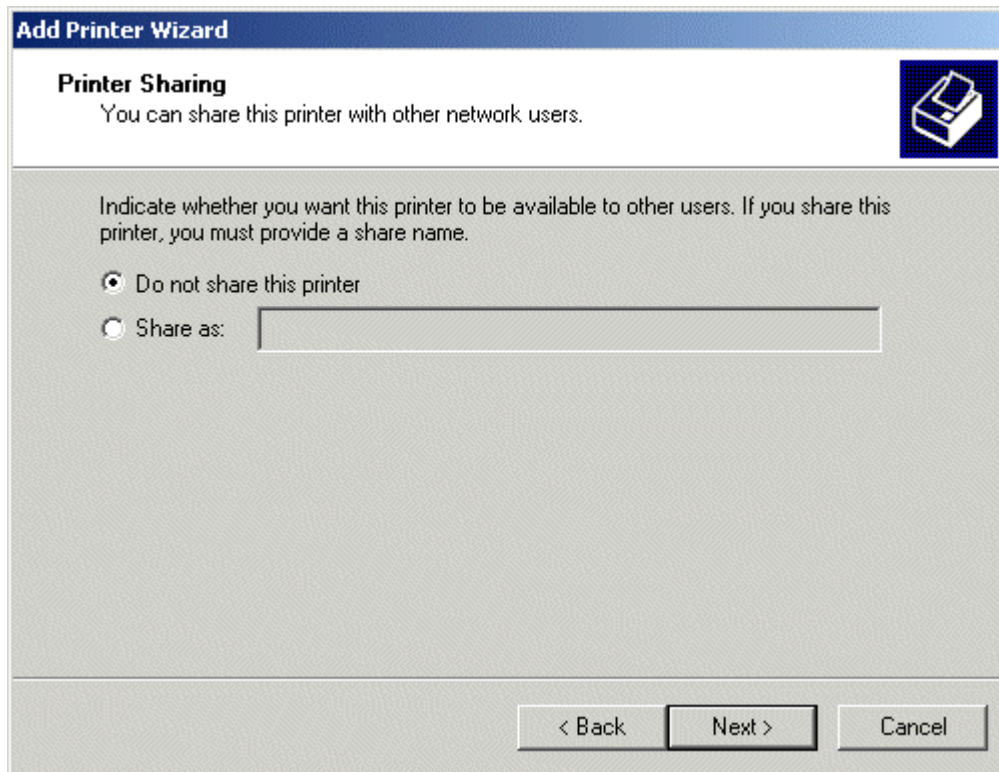
8. Click **Next**



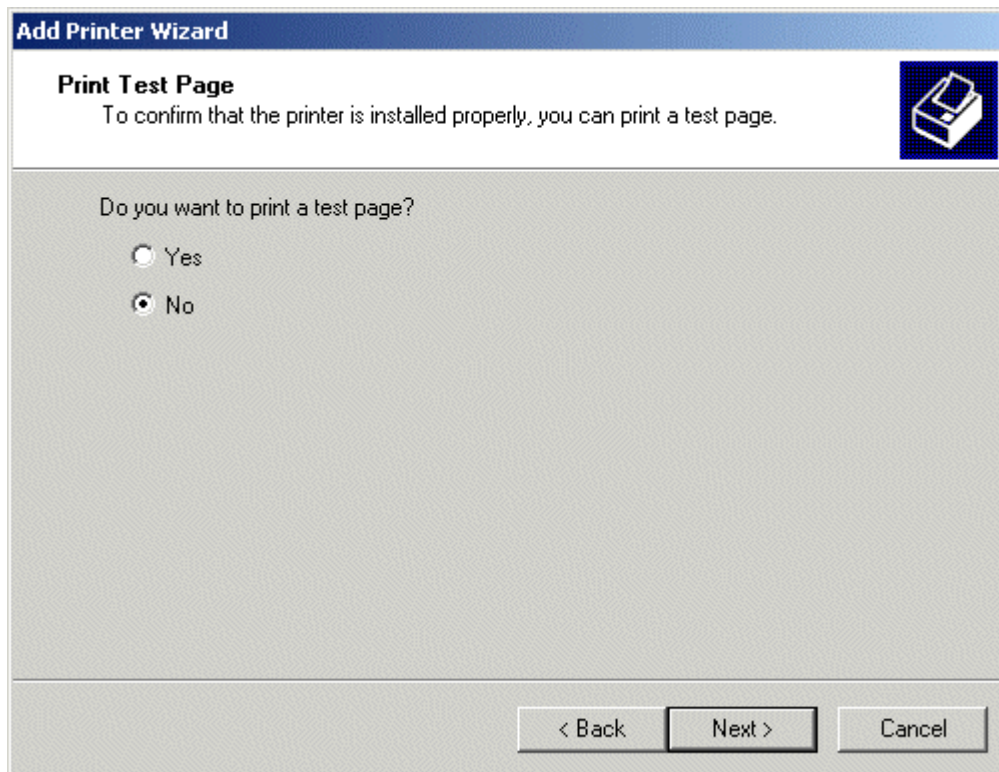
9. Select the option “**Keep existing driver (recommended)**”. Click **Next**



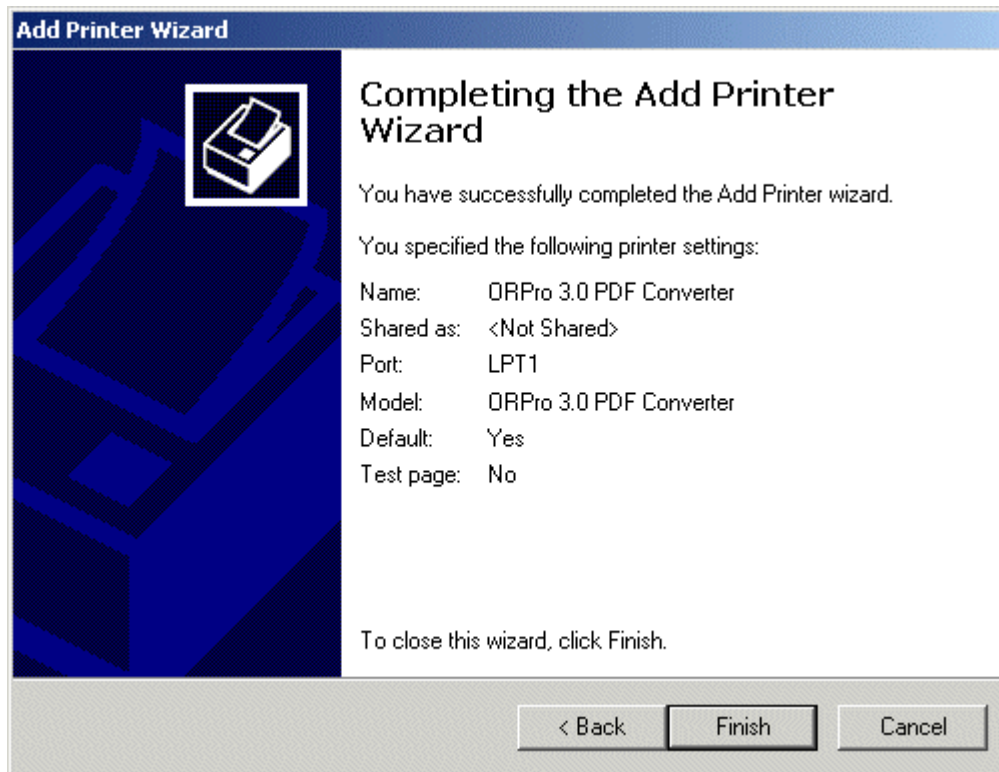
10. Click **Next**



11. Click **Next**



12. Click **Next**



13. Click Start | Settings | Printers to verify that the OfficeReady PDF Printer has been installed.